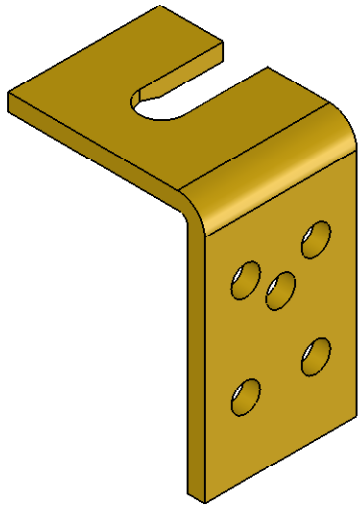
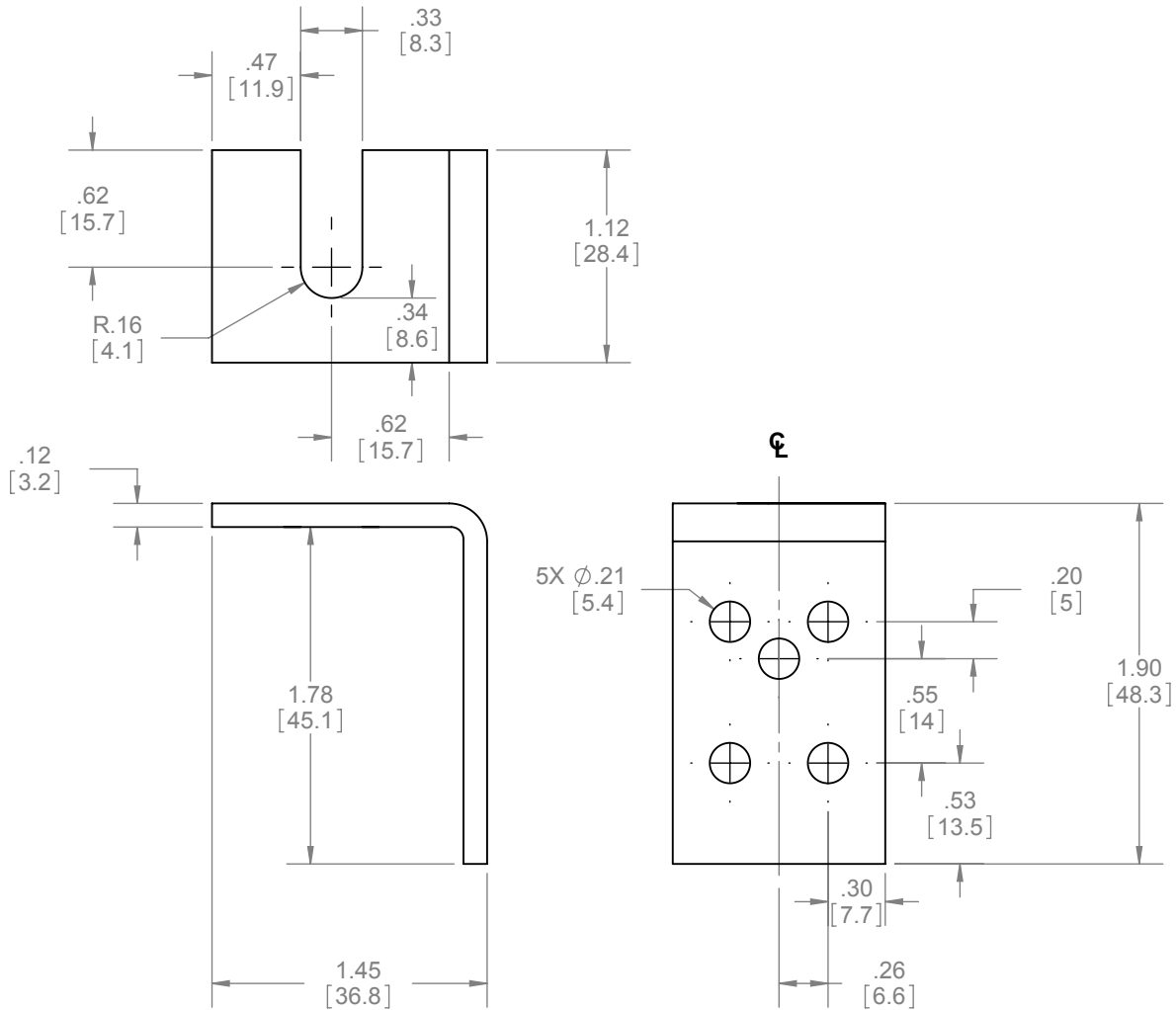



REVISIONS		
REV.	DESCRIPTION	DATE
01	NEW DRAWING FOR WEB	3/20/2008



NOTES:
 - USED TO ATTACH DOOR TO HANGER
 - USED IN CONJUNCTION WITH 9572, 9605, 9606, 9704 AND 9816 HANGER
 - 11/16" (17mm) OFFSET

HARDWARE INCLUDED:
 - 4 PCS #8-32 x 3/4" CROSS PAN HEAD SCREW

 PROPRIETARY & CONFIDENTIAL THE INFORMATION CONTAINED IN THIS DRAWING IS THE SOLE PROPERTY OF HAGER COMPANIES. ANY REPRODUCTION IN PART OR AS A WHOLE WITHOUT THE WRITTEN PERMISSION OF HAGER COMPANIES IS PROHIBITED.	HAGER RESERVES THE RIGHT TO MAKE DESIGN CHANGES WITHOUT NOTICE. CALL HAGER ENGINEERING AT 1-800-325-9995 FOR THE LATEST REVISION DATE OF TEMPLATE.	DRAWN	NJANSEN	1/10/2008	9608 LARGE SIDE MOUNT PLATE	
		ENG. APPR.	M MCRAE	3/20/2008		
		MATERIAL	STEEL		Q.A.	TOLERANCES: FRACTIONAL: ±0.015" ANGULAR: MACH: ± 1° BEND: ±1° TWO PLACE DECIMAL: ±0.01" THREE PLACE DECIMAL: ±0.004"
		FINISH	ZINC PLATED STEEL		DO NOT SCALE DRAWING	
SIZE	DWG. NO.	REV.	SCALE: 1:1		WEIGHT: 0.11	SHEET 1 OF 1
A	S-SD00031	01				